

## Display Repair Kit

This kit is compatible with all Fluke 21, 23, 26, 70, 70 Series II, 70 Series III, 73, 73 Series III, 75, 75 Series II, 76, 77, 77 Series II, 79, and 79 Series II Multimeters.

## Equipment (Tools) Needed



- **Phillips Screwdriver (Not included)**
- **Small Flathead Screwdriver, or equivalent (Not included)**
- **Tweezers (Not included)**
- **Alcohol Pad**
- **Latex Gloves (Surgical Gloves), or similar**
- **Pencil Eraser**
- **(2) Elastomeric Connectors**

### **\*Caution\***

**ESD (Electrostatic Discharge) awareness and practices should be followed to minimize potential damage.**

- **Discharge personal static prior to handling**
- **Avoid plastic, vinyl, and Styrofoam in work area**
- **Perform replacement at a static free work station**

**\*\*Warning\*\***

**Remove All Input Signals and Test Leads Before Proceeding**

### **Step 1: Case Disassembly**

**Disconnect live source from the Fluke Meter's input**

**Turn the Fluke meter to Off position**

**Remove Test Leads**

**Using Phillips head screwdriver, remove the screws from the bottom (lower) Fluke case**



**Separate the Top and Bottom Case**

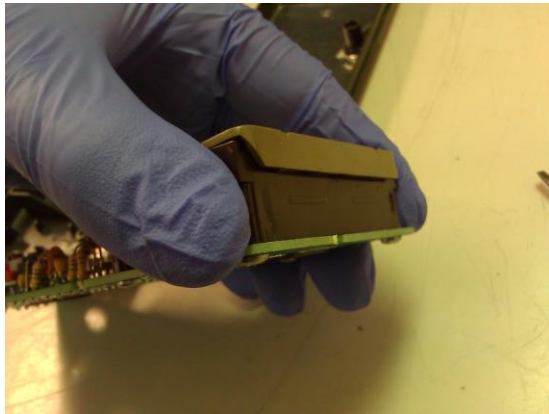


**\*\*\*Now that the casing is open and the inside is exposed, it is recommended to put on the Latex Gloves provided in the kit as an ESD Precaution\*\*\***

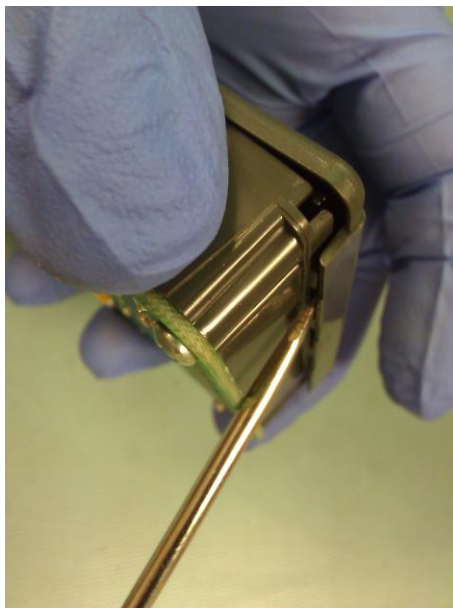
Gloves are not needed if ESD Wrist straps are used.

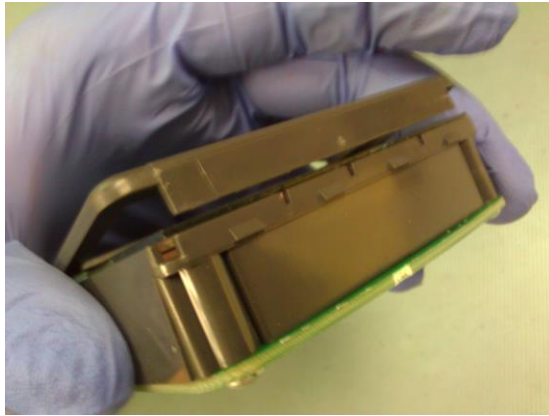
## Step 2: Replacing Elastomeric Connectors

- a. Use the small Flathead Screwdriver to remove the LCD Faceplate

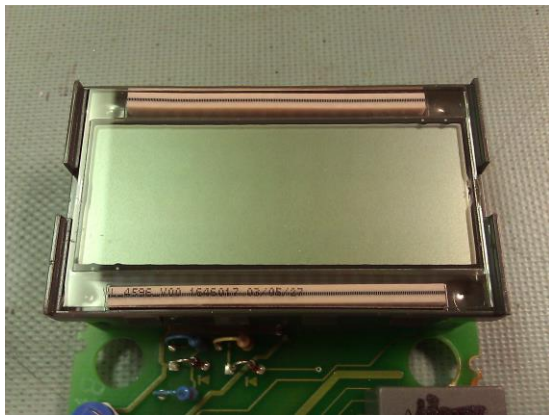


**\*\*\*Warning: Be careful! Plastic becomes brittle with age. Insert the small flathead screwdriver into the opening and very slightly pry up.**

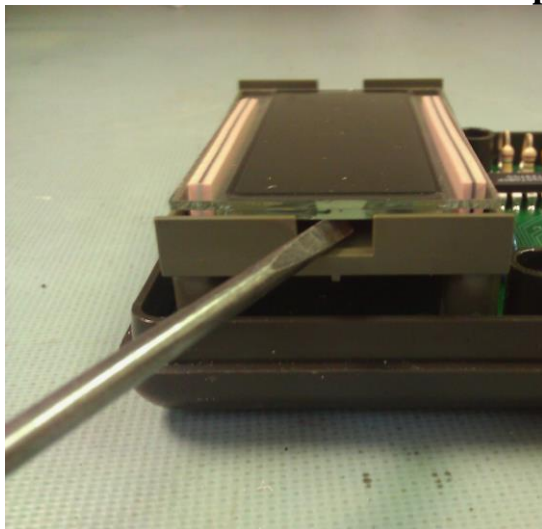




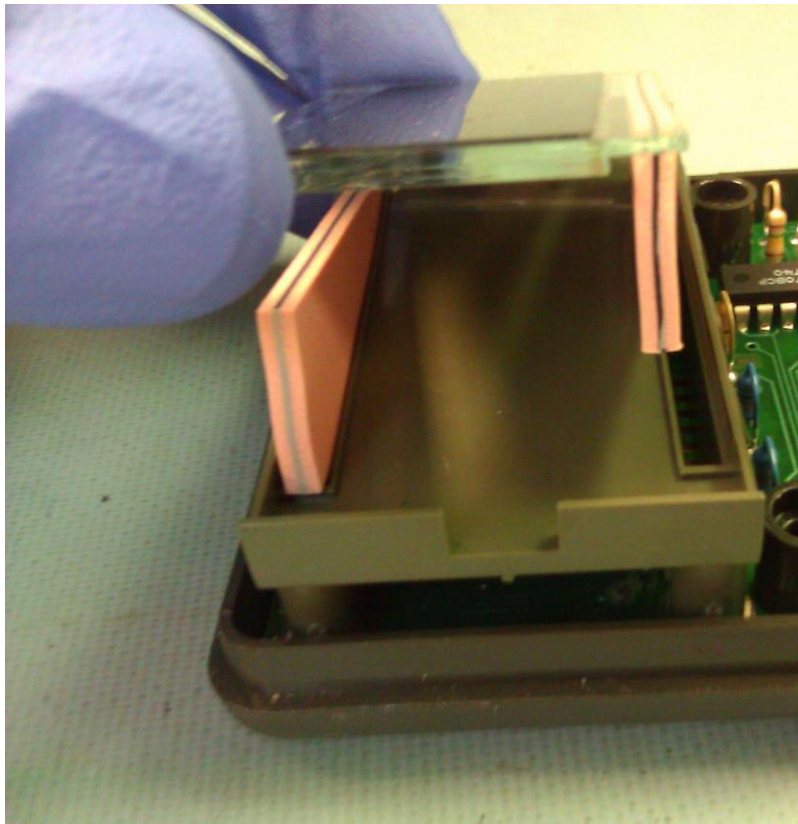
**b. Remove the Faceplate to expose the LCD**



**c. Use your fingers to remove the LCD and Elastomers. You can use your small Flat Head Screwdriver to carefully pry one side of the LCD to loosen it up. **Please Use Caution.****



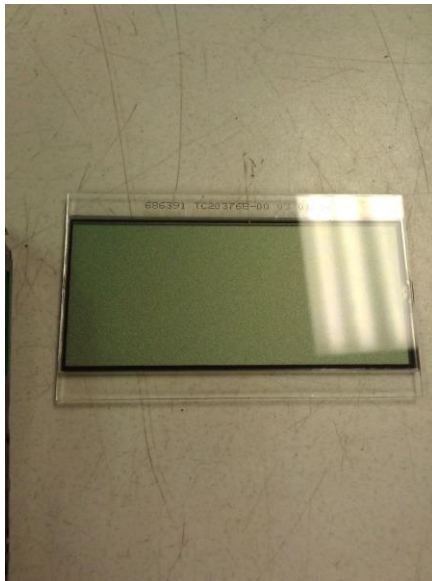
- d. **Carefully Remove the LCD and Elastomers from PCB Board.**
- **LCD may stick a little. It's normal. Carefully lift from the edges until LCD Comes out.**
  - **Elastomeric connectors may, come out along with the LCD. Again, this is normal.**
  - **Use tweezers to remove Elastomeric Connectors if necessary.**



**e. Insert the Two New Elastomers**



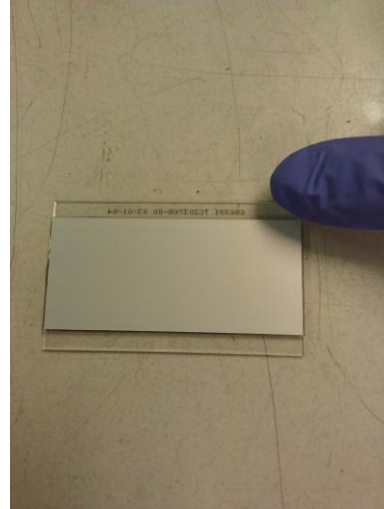
**f. Clean the LCD Contacts with Eraser and Alcohol Pads**



**FRONT**



**BACK**

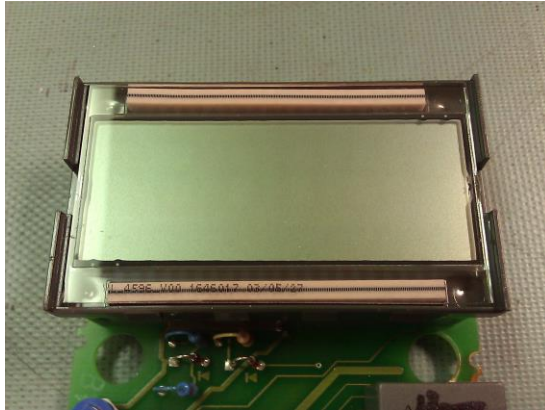


- **Use the Pencil Eraser to rub along the Top and Bottom Edges of the LCD then use the Alcohol Pads to wipe clean around the edges of the LCD**



### Step 3: Re-Assemble Multimeter

- g. Place the clean LCD over the Elastomeric Connectors. Make sure the LCD Digit Side is face up and not upside down.**



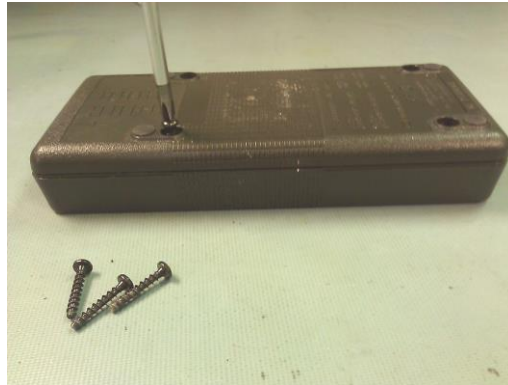
- h. Place the LCD Faceplate over the LCD and gently press down and snap into place**



- i. Seat the Top Case and Bottom Case back together**



- j. **Insert the Screws to the Bottom Case and use Phillips Screwdriver to tighten the cases together.**



**Enjoy your nice digital display.**

**\*\*\*IMPORTANT\*\*\***

**If your display is physically damaged, or cracked, or if the LCD Cover is broken or cracked, then this procedure will not work. The LCD cover, or LCD would have to be replaced separately to fix the display.**

**All Kits Come with 60 day money back Warranty, or item exchange. Buyer pays return shipping**

**For more information on Fluke Series LCD Repair Kits, Services, and Input Connectors, please email us at [contact@displayrepairkit.com](mailto:contact@displayrepairkit.com).**

**We are now offering Calibration Services on All Test Equipment. All Calibrations are NIST Traceable and come with calibration sticker and certificate. A2LA Certified. Contact us for more information.**

**This Procedure has been produced by [www.displayrepairkit.com](http://www.displayrepairkit.com) and may not be copied, or redistributed without expressed written consent.**

**Copyright 2013, all rights reserved.**